



HELLO,  
NEW  
LABOPORT  
SYSTEMS!

UNIQUE DESIGN  
FOR LAB LIFE  
LABOPORT®  
VACUUM PUMPS  
AND SYSTEMS

AN EYE FOR DETAIL

## RETHINKING EVERYDAY LAB PRACTICE

What aspects do you believe are key when using vacuum pumps in everyday lab practice? What does it take to create simple, economical processes that are reliable day in, day out? And what makes work enjoyable?

These are the questions we used as a guide when redesigning our successful laboratory pump series LABOPORT®. We became involved in daily lab work, asking users what they wished for, enlisting experts to perform tests and incorporating their suggestions.

**The result? Clever, elegant design with clear benefits in terms of handling and functionality.**

HELLO,  
NEW  
LABOPORT!

WE KNOW WHAT COUNTS

# UNIQUE DESIGN, EASE OF USE

■ **Exceptionally space saving**

The impressively compact device takes up little space.

■ **Easy to clean**

The smooth surfaces without any ribs or hard edges are easy to keep clean.

■ **ATEX-compliant and chemically resistant for very aggressive/corrosive gases**

The inner, wetted area has been equipped to transfer explosive atmospheres.



■ **Speed-controlled**

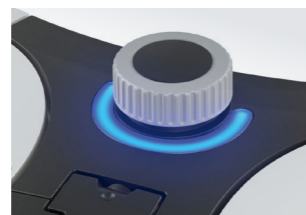
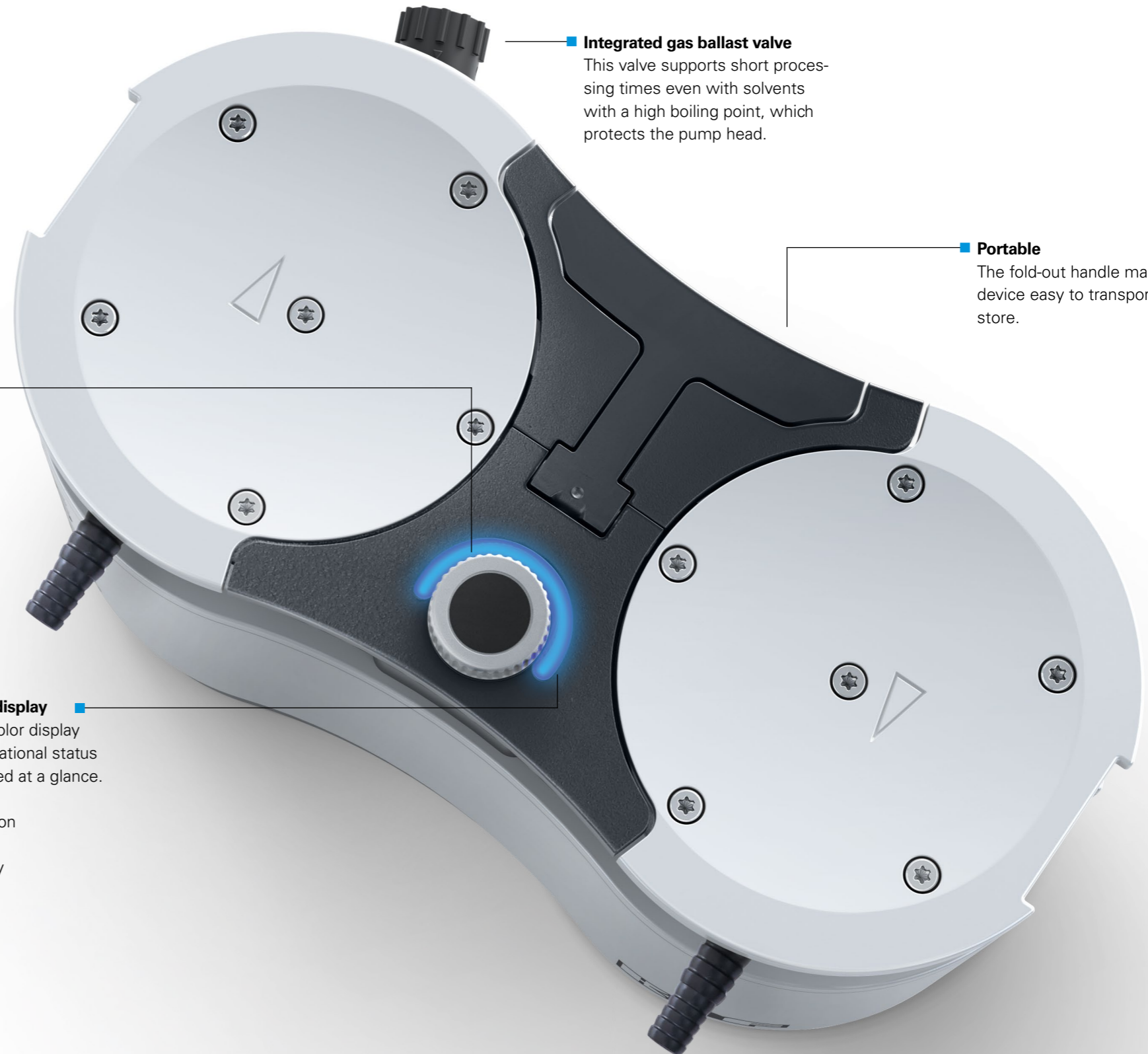
The speed can be controlled by simply manually adjusting the vacuum power using the control knob or via an interface by connecting the pump to KNF's LABOPORT® Vakuum-Controller. Ideal for combining with all common vacuum controllers with valve control.

■ **Integrated gas ballast valve**

This valve supports short processing times even with solvents with a high boiling point, which protects the pump head.

■ **Portable**

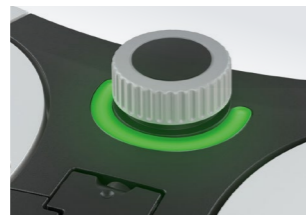
The fold-out handle makes the device easy to transport and store.



■ **3-color status display**

The changing color display allows the operational status to be ascertained at a glance.

Blue: in operation



Green: stand-by



Red: error

PERFECT FIT VACUUM SYSTEM

## MODULAR AND EXPANDABLE



LABOPORT® SC 820 G



LABOPORT® N 820 G

HELLO,  
NEW  
LABOPORT  
SYSTEMS!

The new laboratory vacuum pump system guarantees maximum performance and safety in the laboratory, tailored to your individual needs:

The powerful basic pump can be easily modified to an even higher environmentally friendly system. Various system components such as a separator, high-performance condenser and the new vacuum controller, allows the systems to be used for a wide range of laboratory applications.

### Simple, safe, precise

- Automatic, accurate recognition and monitoring of the boiling point using the integrated ramp function
- No solvent library needed
- High recovery rates even with low boiling point solvents
- ATEX-compliant in accordance with (Ex) II 2/-G IIB+H2 T3 internal atmosphere only



LABOPORT® Vacuum-Controller System  
for Vacuum Pump System SC 820 G and SC 840 G



LABOPORT® SR 820 G

### Environmentally friendly technology

- Safe recovery of solvents
- Protection against aggressive chemicals
- High energy efficiency

SIMPLE AND INTUITIVE

# SMART CONTROLLED

More efficient, more convenient and much safer in the laboratory: With our new laboratory vacuum pump systems you have your vacuum under control at all times.

The new highlight: The vacuum controller for the pump systems SC 820 G and SC 840 G. The controller provides intuitive handling and maximum operating comfort. Its newly developed touchscreen display with high-precision vacuum control provides full process control, and thanks to the large user interface, you always have an overview.

All functions are clearly displayed on one level – at a glance and without any complicated sub menus. The new Vacuum Controller stands for absolute precision, safety and functionality – for almost all common laboratory applications... simply the way you need it.

**Wide range of use**  
Four operating modes for almost all common laboratory applications.



**All at a glance**  
Simple, intuitive operation thanks to touch-screen display and precise rotary knob control.

**Safe to use**  
Wireless remote control for safe operation outside for closed fume cupboards.



# AN ALL-ROUNDER IN THE LAB



LABOPORT® N 96



LABOPORT® N 820 G



LABOPORT® SR 820 G



LABOPORT® SH 820 G



LABOPORT® SC 820 G

		LABOPORT® N 96	LABOPORT® N 820 G II 2/-G IIB+H2 T3 internal atmosphere only	LABOPORT® N 840 G II 2/-G IIB+H2 T3 internal atmosphere
APPLICATION	Filtration	x		x
	Vacuum Oven		x	x
	SPE	x		
	Degassing		x	x
	Fluid aspiration	x	x	x
	Distillation			
	Gel drying		x	
	Rotary evaporation		x	x
	Centrifugal concentration			x
	Multi-user vacuum systems			
TECHNICAL DATA	Flow rate (m³/h) at atm. pressure	0.4	1.2	2.04
	Ultimate vacuum (mbar abs.)	<130	6	6
	Operating pressure (bar)	2.5	0.1	0.1
	Hose connections (mm)	NPT 1/8 – ID6, PP	ID 9.5–8, PVDF	ID 9.5–8, PVDF
	Permissible media and ambient temperature	+5 ... +40 °C	+5 ... +40 °C	+5 ... +40 °C
	Integrated gas ballast valve	No	Yes	Yes
	Integrated rotational speed control	Yes	Yes	Yes
	Weight (kg)	1.3	8.8	11.3
	Dimensions W x H x D (mm)	156 x 119 x 75	163 x 220 x 259	177 x 240 x 289
MATERIAL	Pump head	PPS	PTFE	PTFE
	Diaphragm	PTFE-coated	PTFE-coated	PTFE-coated
	Valves	FKM	FFPM	FFPM
ACCESSORIES	Column fixture	Order No. 323484		

**ATEX KEY FOR LABOPORT N 820 G AND N 840 G AND THE TRANSFERABLE, EXPLOSIVE GASES AND VAPORS:**

II 2/-G IIB+H2 T3 INTERNAL ATMOSPHERE ONLY			
	T1	T2	T3
	methane		
I IA	acetone, ammonia, benzene (pure), acetic acid, ethane, ethyl acetate, carbon oxide, methanol, propane, toluene	ethyl alcohol, n-butane, n-butyl alcohol	gasolines, diesel fuel, aviation fuel, fuel oils, n-hexane
I IB	town gas	ethene	
I IC	hydrogen		

LABOPORT® SR 820 G	LABOPORT® SR 840 G	LABOPORT® SH 820 G	LABOPORT® SH 840 G	LABOPORT® SC 820 G with Vacuum-Controller	LABOPORT® SC 840 G with Vacuum-Controller
x	x				
x	x			x	x
	x				
x					
		x	x	x	x
		x	x	x	x
x	x				
		x	x	x	x
1.2	2.04	1.2	2.04	1.2	2.04
6					
0,1					
ID 9.5–8, PVDF					
+5 ... +40 °C					
Yes					
Yes					
10,7	13.1	11.7	14.1	13.35	15.75
282 x 234 x 260	299 x 250 x 274	323 x 416 x 260	340 x 416 x 274	Vacuum Pump System: 347 x 416 x 260 Controller: 162 x 96 x 51, Docking station controller: 96 x 88 x 101	Vacuum Pump System: 366 x 416 x 274 Controller: 96 x 88 x 101
PTFE					
PTFE-coated					
FFPM					

**ZUBEHÖR**

	LABOPORT® SR 820 G	LABOPORT® SR 840 G	LABOPORT® SH 820 G	LABOPORT® SH 840 G	LABOPORT® SC 820 G	LABOPORT® SC 840 G
Separator flask	Order No. 047729					
High performance condenser with pressure relief valve	-		Order No. 114855			
Hose connector with O-ring (FPM)	Order No. 323609					
Hose connector PP (for hose ID10)	Order No. 026237					
Screw connection cap red, GL18 (for hose connector ID 026237)	Order No. 025980					
Hose connector PP (for hose ID8)	Order No. 025981					
Screw connection cap red, GL14 (for hose connector ID 025981)	Order No. 025982					
Key for hose connector	Order No. 316279					
Connection cable (for combination with VC 900) 2 m	Order No. 323829					
Connecting cable (for combination with VC 900) 5 m	Order No. 323830					
Hose-BGR Separator (1x for SC 820/840 G)	-				Order No. 329998	
Hose-BGR High performance condenser (1x for SC 820/840 G)	-				Order No. 317157	
Hose-BGR for Separator flask (1x for SH 840 G)	-		Order No. 323095		-	
Hose-BGR for high performance condenser (1x for SH 840 G)	-		Order No. 317157		-	
Hose connector Y-piece - ID10	Order No. 026432					
Docking station controller	-				Order No. 336784	
Battery pack controller	-				Order No. 339004	



# WolfLabs

**Pricing on any accessories shown can be found by keying the part number into the search box on our website.**

The specifications listed in this brochure are subject to change by the manufacturer and therefore cannot be guaranteed to be correct. If there are aspects of the specification that must be guaranteed, please provide these to our sales team so that details can be confirmed.

**[www.wolflabs.co.uk](http://www.wolflabs.co.uk)**

**Tel : 01759 301142**

**Fax : 01759 301143**

**[sales@wolflabs.co.uk](mailto:sales@wolflabs.co.uk)**

Please contact us if this literature doesn't answer all your questions.